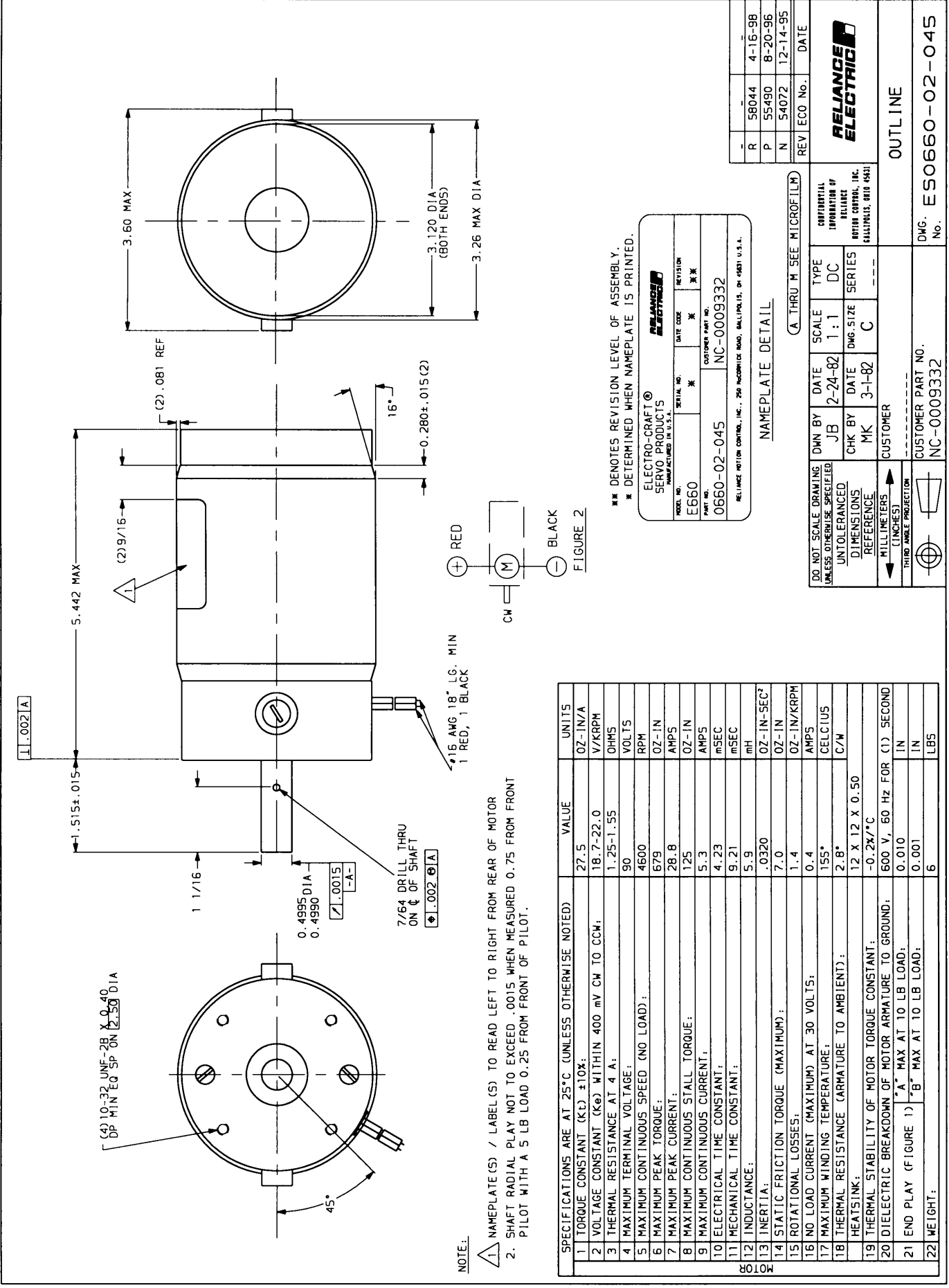


ORIGINAL
IN RED



NOTE:

- NAMEPLATE(S) / LABEL(S) TO READ LEFT TO RIGHT FROM REAR OF MOTOR
- SHAFT RADIAL PLAY NOT TO EXCEED .0015 WHEN MEASURED 0.75 FROM FRONT PILOT WITH A 5 LB LOAD 0.25 FROM FRONT OF PILOT.

SPECIFICATIONS ARE AT 25°C (UNLESS OTHERWISE NOTED)	VALUE	UNITS
1 TORQUE CONSTANT (Kt) ±10%	27.5	OZ-IN/A
2 VOLTAGE CONSTANT (Ke) WITHIN 400 mV CW TO CCW.	18.7-22.0	V/KRPM
3 THERMAL RESISTANCE AT 4 A.	1.25-1.55	OHMS
4 MAXIMUM TERMINAL VOLTAGE:	90	VOLTS
5 MAXIMUM CONTINUOUS SPEED (NO LOAD):	679	RPM
6 MAXIMUM PEAK TORQUE:	28.8	AMPS
7 MAXIMUM CONTINUOUS STALL TORQUE:	125	OZ-IN
8 MAXIMUM CONTINUOUS CURRENT:	5.3	AMPS
9 ELECTRICAL TIME CONSTANT:	9.21	mSEC
10 MECHANICAL TIME CONSTANT:	5.9	mH
11 INERTIA:	.0320	OZ-IN-SEC ²
12 STATIC FRICTION TORQUE (MAXIMUM):	7.0	OZ-IN
13 ROTATIONAL LOSSES:	1.4	OZ-IN/KRPM
14 NO LOAD CURRENT (MAXIMUM) AT 30 VOLTS:	0.4	AMPS
15 MAXIMUM WINDING TEMPERATURE:	155*	CELCIUS
16 THERMAL RESISTANCE (ARMATURE TO AMBIENT):	2.8*	C/W
HEATSINK:	12 X 12 X 0.50	
17 THERMAL STABILITY OF MOTOR TORQUE CONSTANT:	-0.2%/°C	
18 DIELECTRIC BREAKDOWN OF MOTOR ARMATURE TO GROUND:	600 V., 60 HZ FOR (1) SECOND	
19 END PLAY (FIGURE 1)	*A* MAX AT 10 LB LOAD;	IN
	B MAX AT 10 LB LOAD;	IN
20 WEIGHT:	6	LBS

** DENOTES REVISION LEVEL OF ASSEMBLY.
* DETERMINED WHEN NAMEPLATE IS PRINTED.

ELECTRO-CRAFT © SERVO PRODUCTS MANUFACTURED IN U.S.A.	
MODEL NO. EB60	REVISION
SERIAL NO. 0660-02-045	DATE CODE 2-24-82
CUSTOMER PART NO. NC-0009332	REVISION
RELiance ROTOR CONTROL, INC., 250 HICKORY ROAD, BALTIMORE, MD 45821 U.S.A.	

NAMEPLATE DETAIL

DO NOT SCALE DRAWING UNLESS OTHERWISE SPECIFIED	DOWN BY JB	DATE 2-24-82	SCALE 1:1	TYPE DC	CONTINENTAL INFORMATION OF RELIANCE
DIMENSIONS UNLESS OTHERWISE SPECIFIED	CHK BY MK	DATE 3-1-82	DWG. SIZE C	SERIES ---	RELIANCE MOTOR CONTROL, INC. BALTIMORE, MD 45821
REFERENCE	MILLIMETERS (INCHES)		THIRD ANGLE PROJECTION		
CUSTOMER PART NO. NC-0009332					DATE 4-16-98
OUTLINE					REV ECO No.
DWG. NO. ESO660-02-045					DATE 8-20-96
					REV ECO No. 12-14-95

