

PathPilot 2.0 installation using VirtualBox

Created on April 4, 2023 by Greg Carl (snowgoer540)

This installation guide assumes:

- You have a Tormach PathPilot 2.0.0 thumb drive

Section 1 - Required - Download the Plop ISO

To get the **Plop** ISO:

1. Navigate to <https://www.plop.at/en/ploplinux/downloads/full.html>
2. Download the Live Version 64-bit “Small” iso

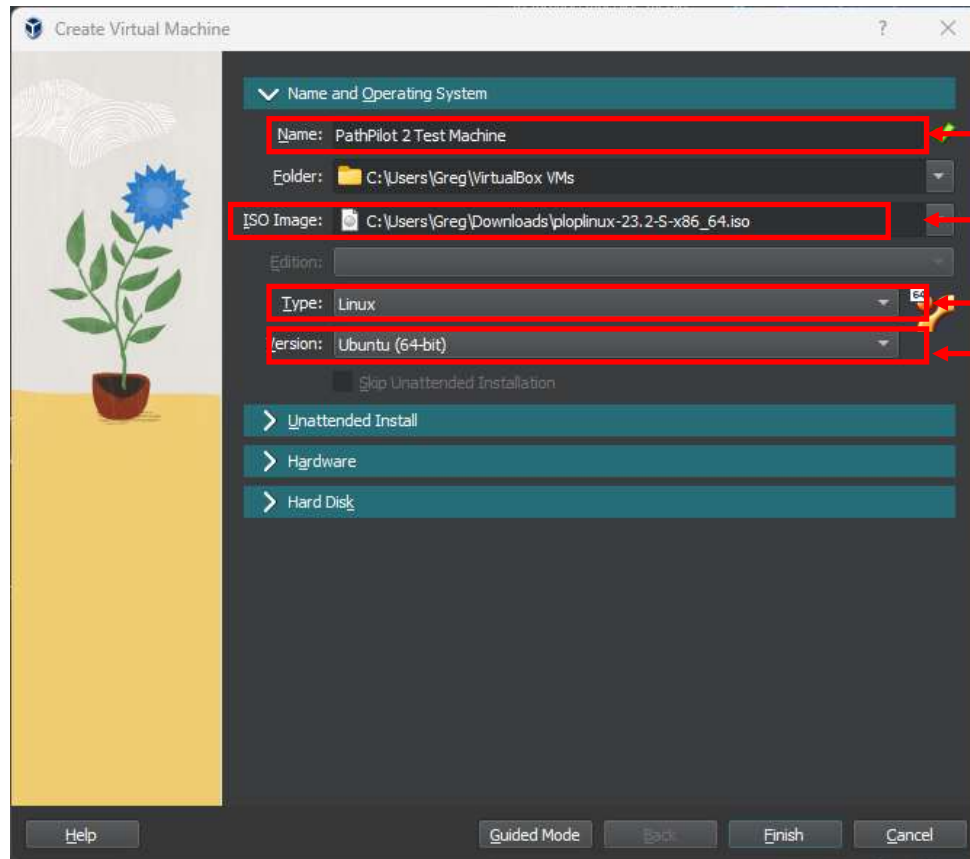
Download Live version

Edition	32-bit, i486	64-bit, x86_64	
Standard	iso , tar.gz , zip	iso , tar.gz , zip	2.79 GB
Small	iso , tar.gz , zip	iso , tar.gz , zip	376.81 MB, size reduced - without Xorg, GCC, MAN, Python
BRL	iso , tar.gz , zip	iso , tar.gz , zip	3.17 GB, for blind / visually impaired users

Section 2 – Configuring VirtualBox

Open VirtualBox:

1. In the top header, click “New”:



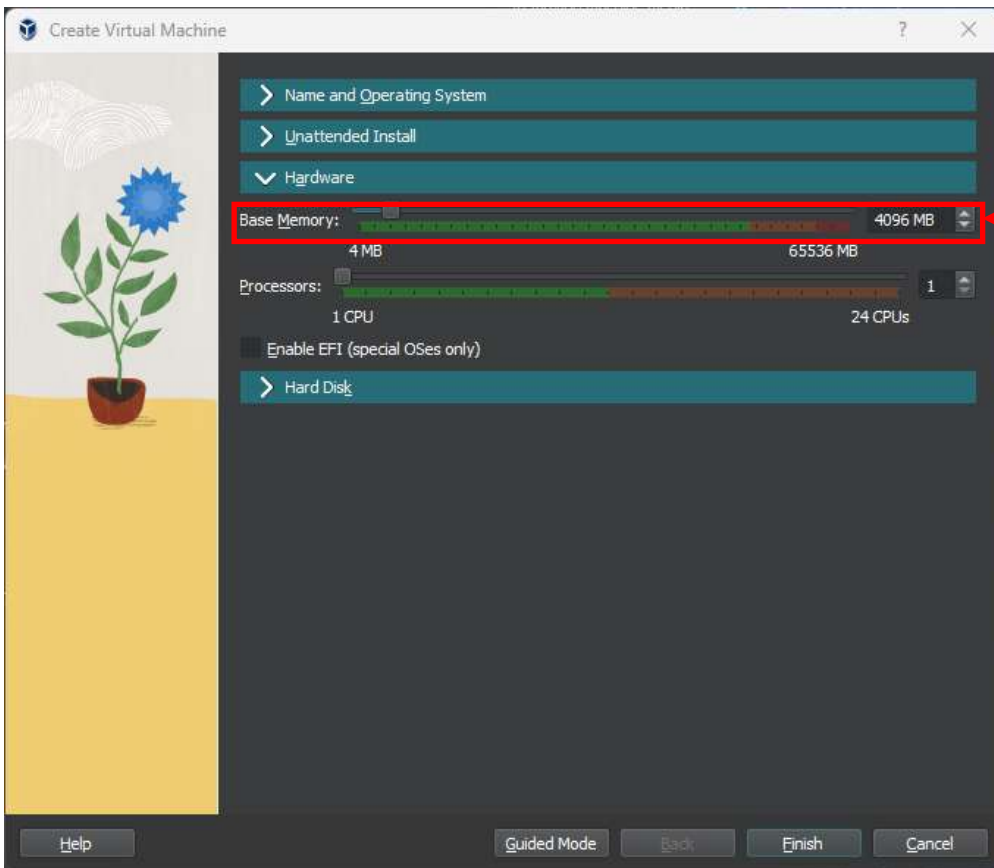
Give the VM a name

Choose the location of the plo linux iso

Change the type to Linux

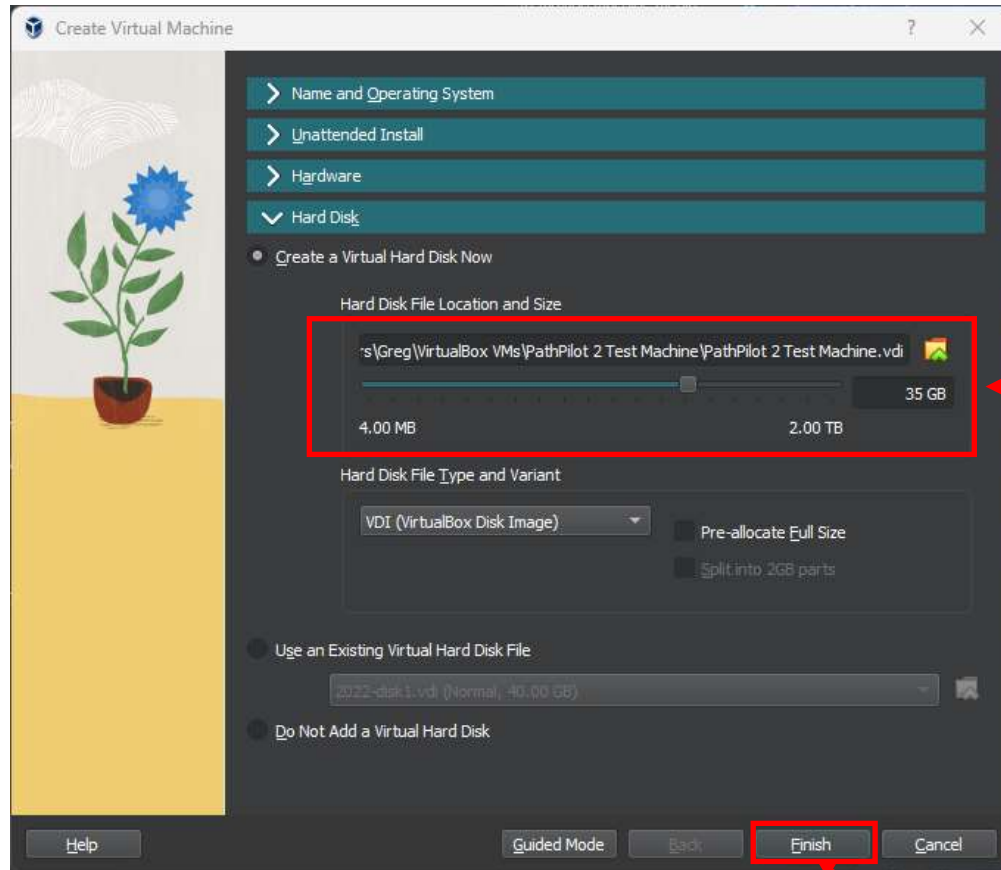
Change the version to Ubuntu (64-bit)

Section 2 – Configuring VirtualBox (Cont.)



Change the base memory to
4Gb (min)

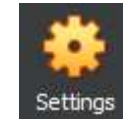
Section 2 – Configuring VirtualBox (Cont.)



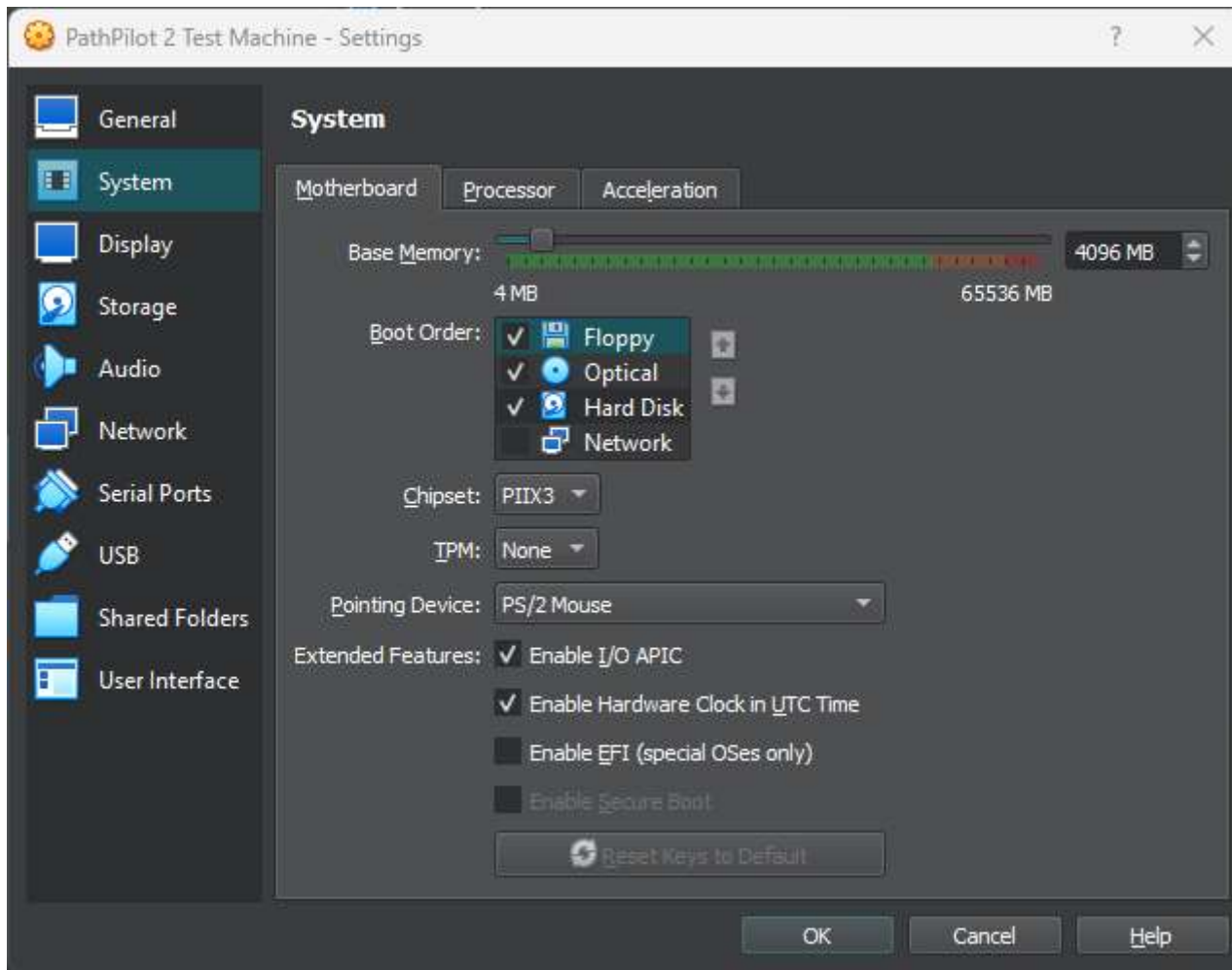
Minimum size for installation is 28.8Gb

Click Finish

Section 3 – Configuring Settings

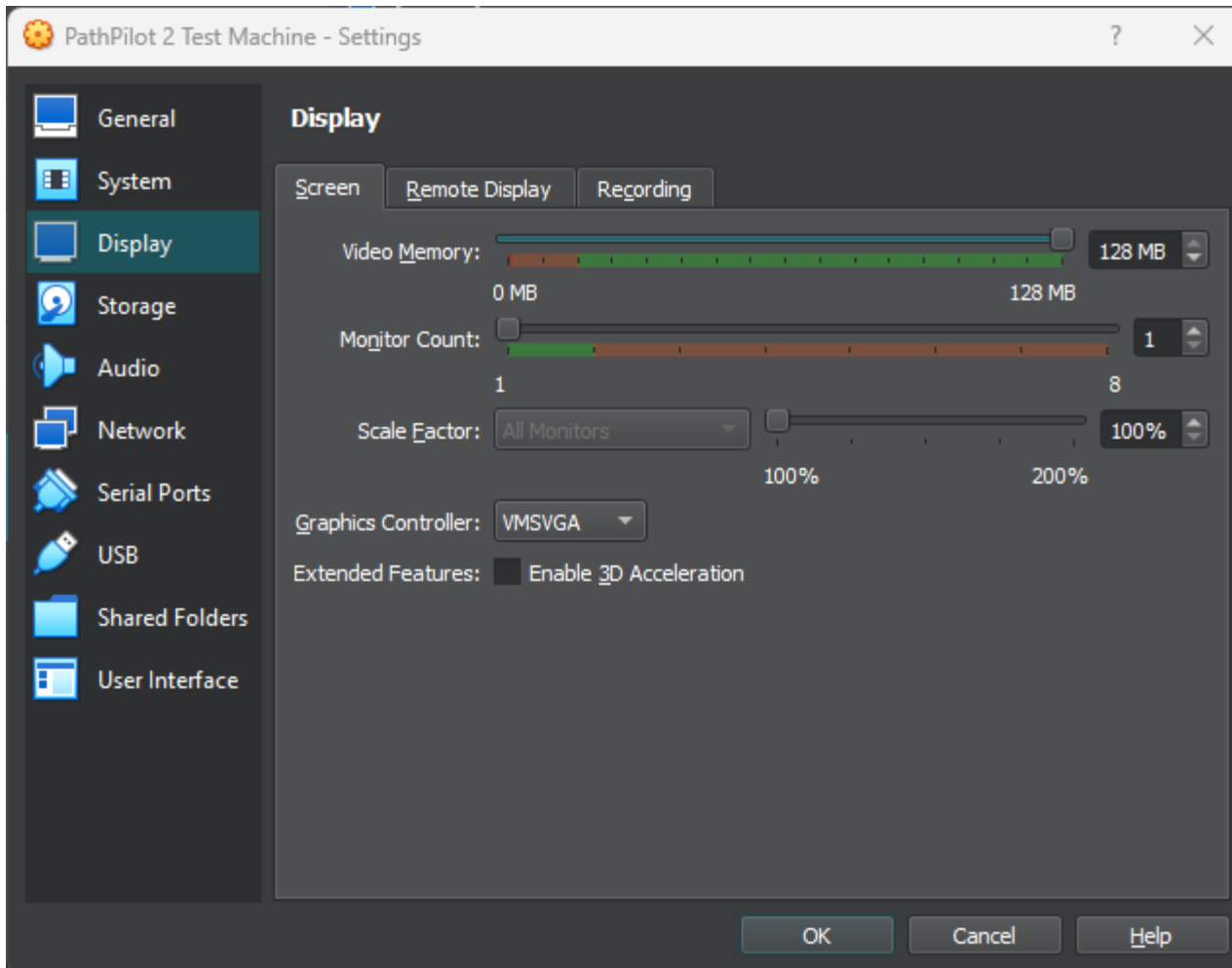


1. Select the VM you just created then click “Settings”:
2. Ensure the System screen matches as below:



Section 3 – Configuring Settings (Cont.)

1. Ensure the Display screen matches as below:

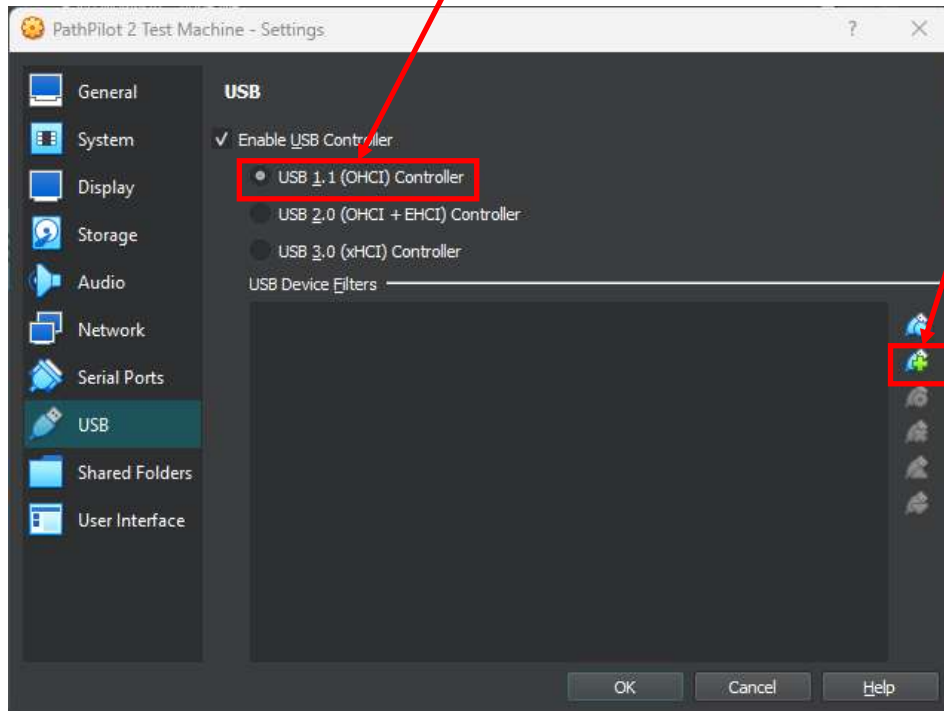


Section 3 – Configuring Settings (Cont.)

1. In the USB Tab:

Click “USB 1.1 (OHCI) Controller”

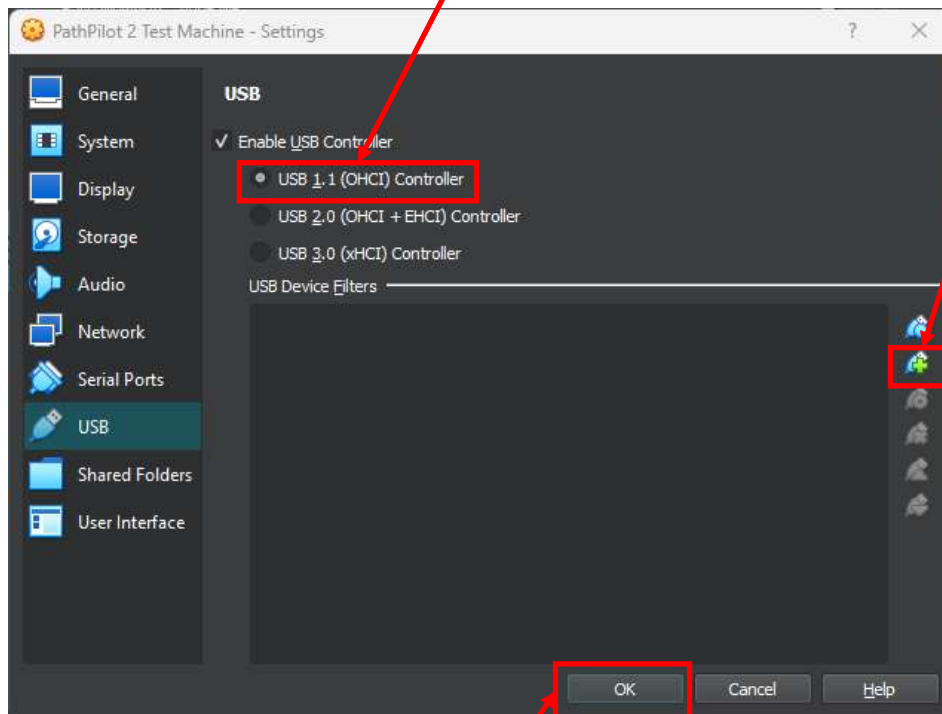
Click to add a USB device



Section 3 – Configuring Settings (Cont.)

1. In the USB Tab:

Click “USB 1.1 (OHCI) Controller”



Click to add a USB device

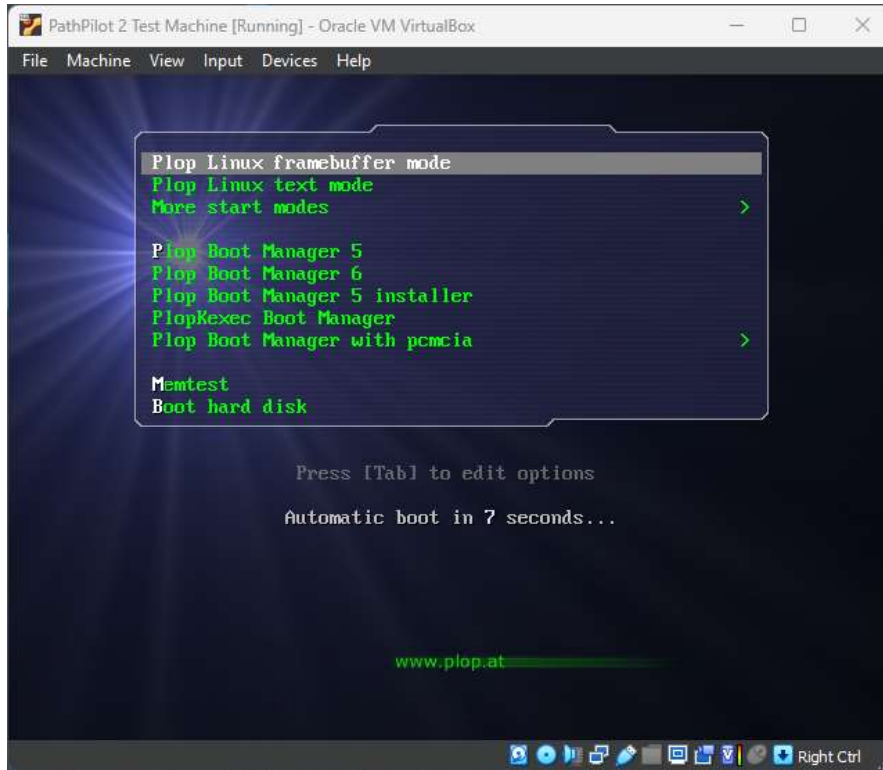
From the popup, choose the USB device. Generally it is the “Generic Mass Storage Device”, but it may require removing the PathPilot USB stick to see what goes away.

After selecting the correct device, click OK



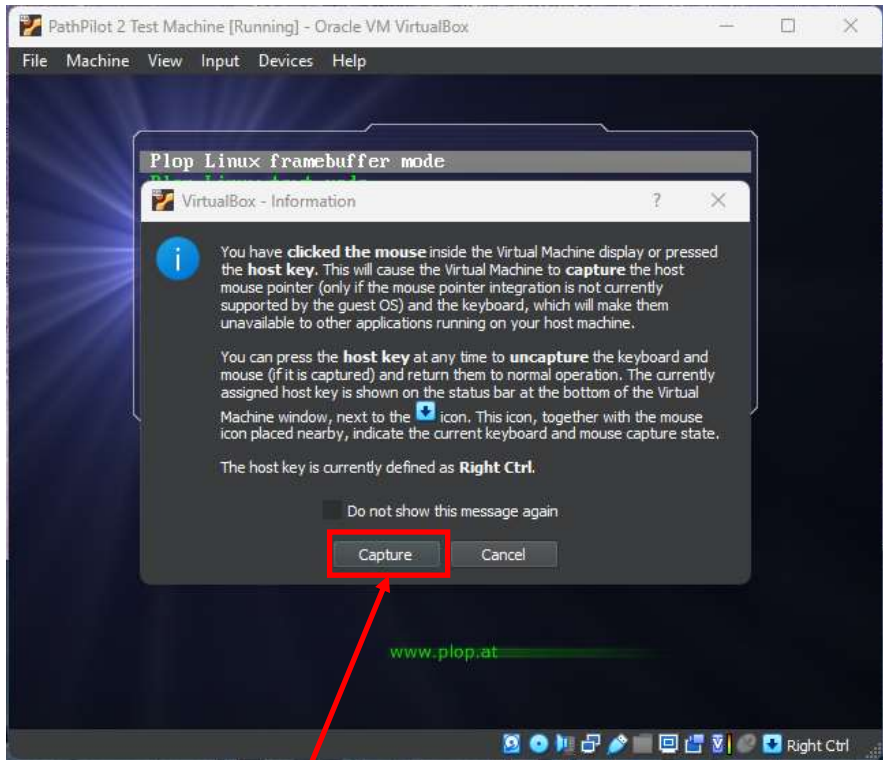
Section 4 – Installing PathPilot

1. Select the VM and Click “Start”:



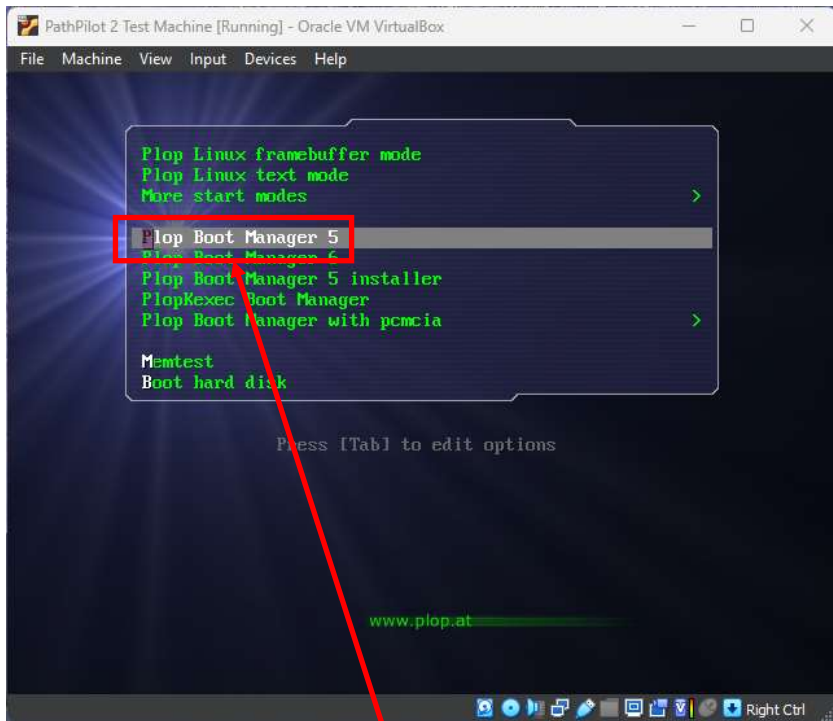
Click anywhere in this window

Section 4 – Installing PathPilot (Cont.)

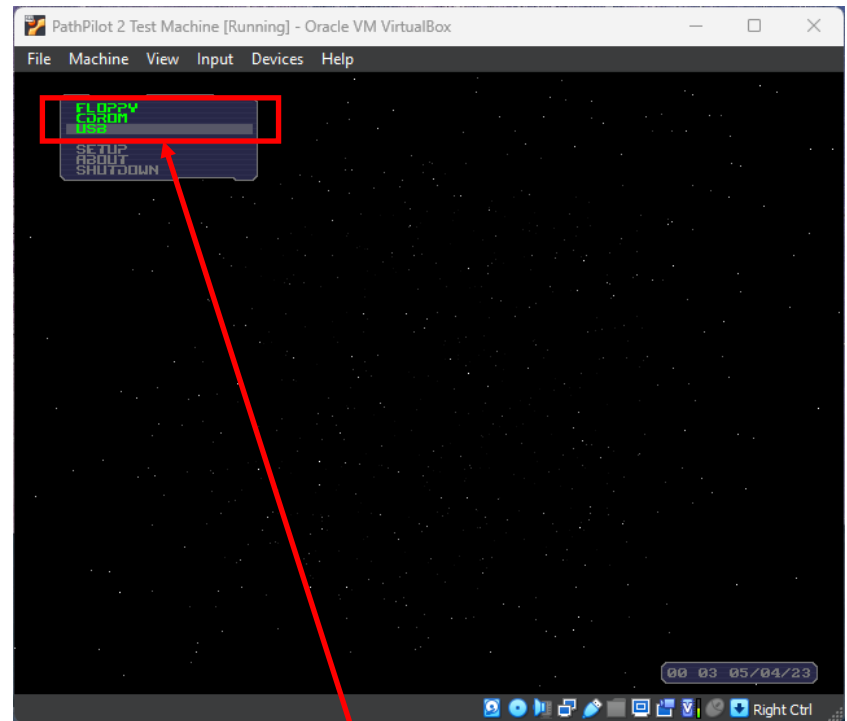


Click Capture

Section 4 – Installing PathPilot (Cont.)

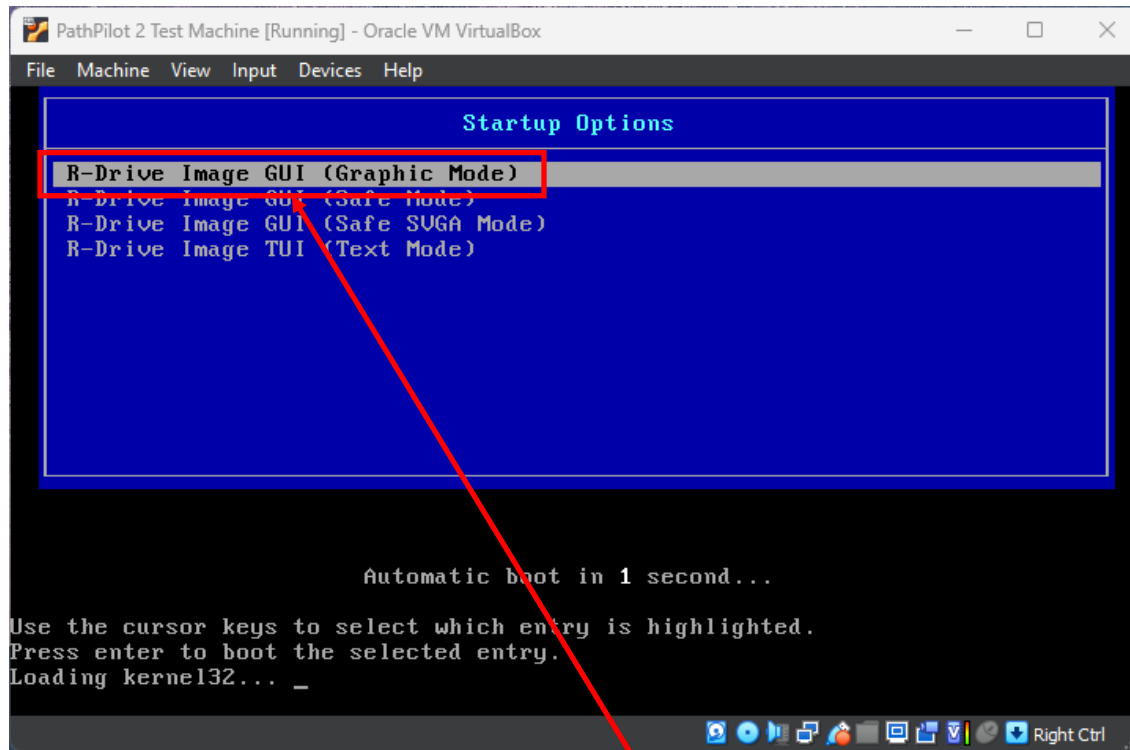


Choose PloP Boot Manager 5
(using the keyboard arrows)



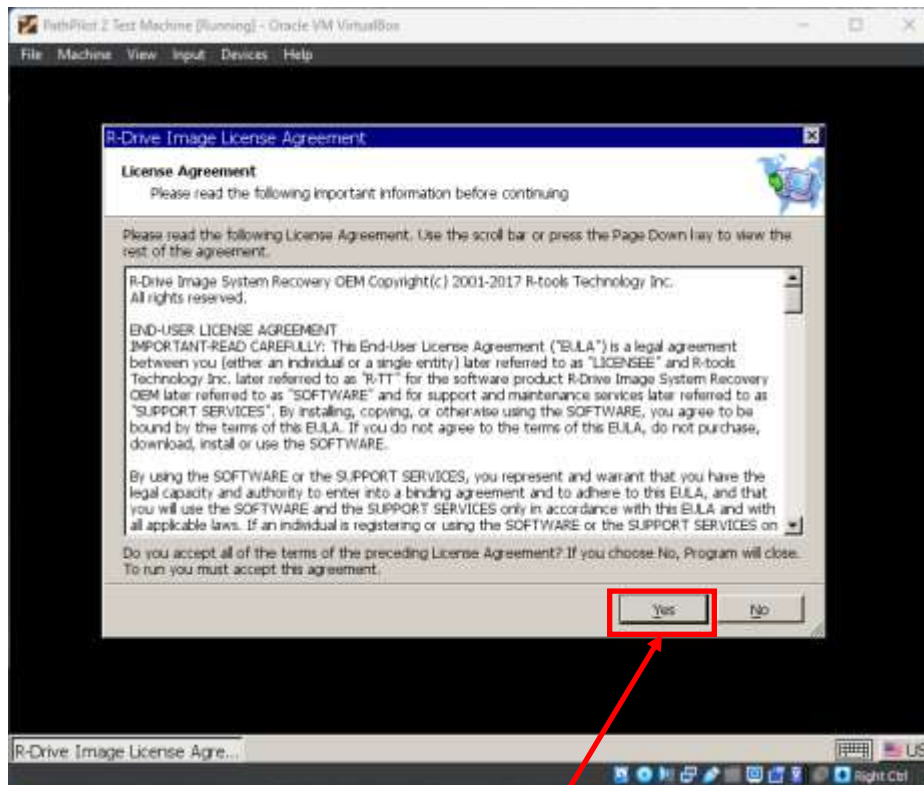
Then choose USB, press Enter

Section 4 – Installing PathPilot (Cont.)



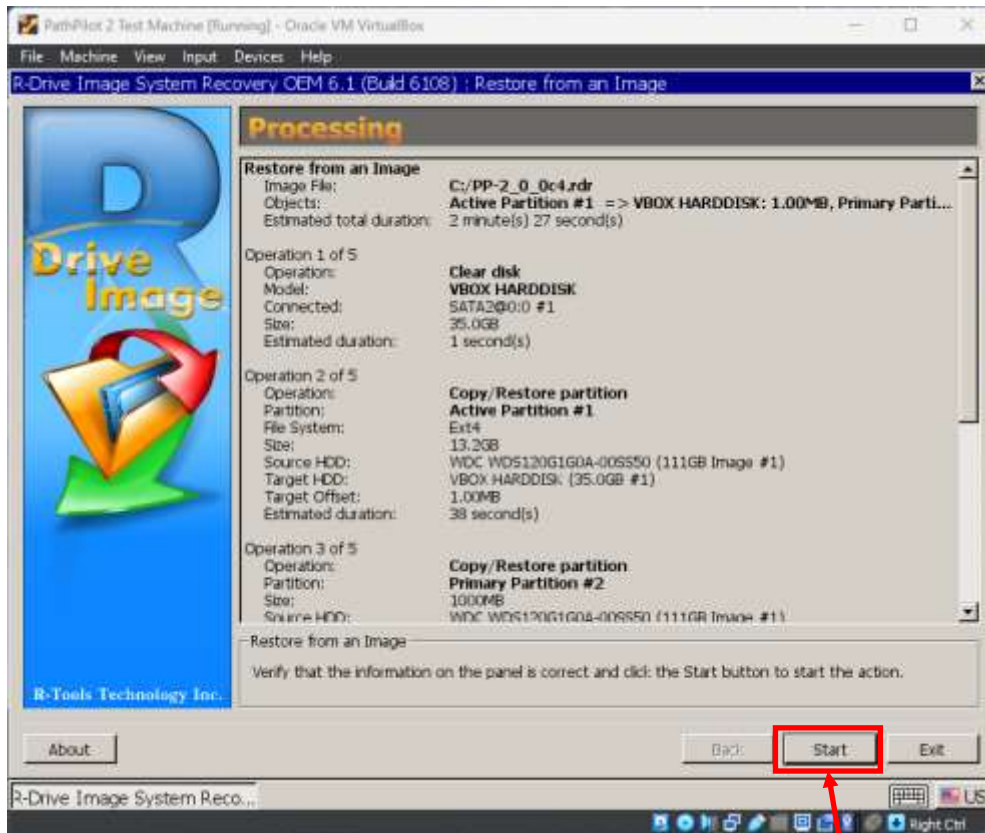
Choose R-Drive Image GUI (Graphic Mode)

Section 4 – Installing PathPilot (Cont.)



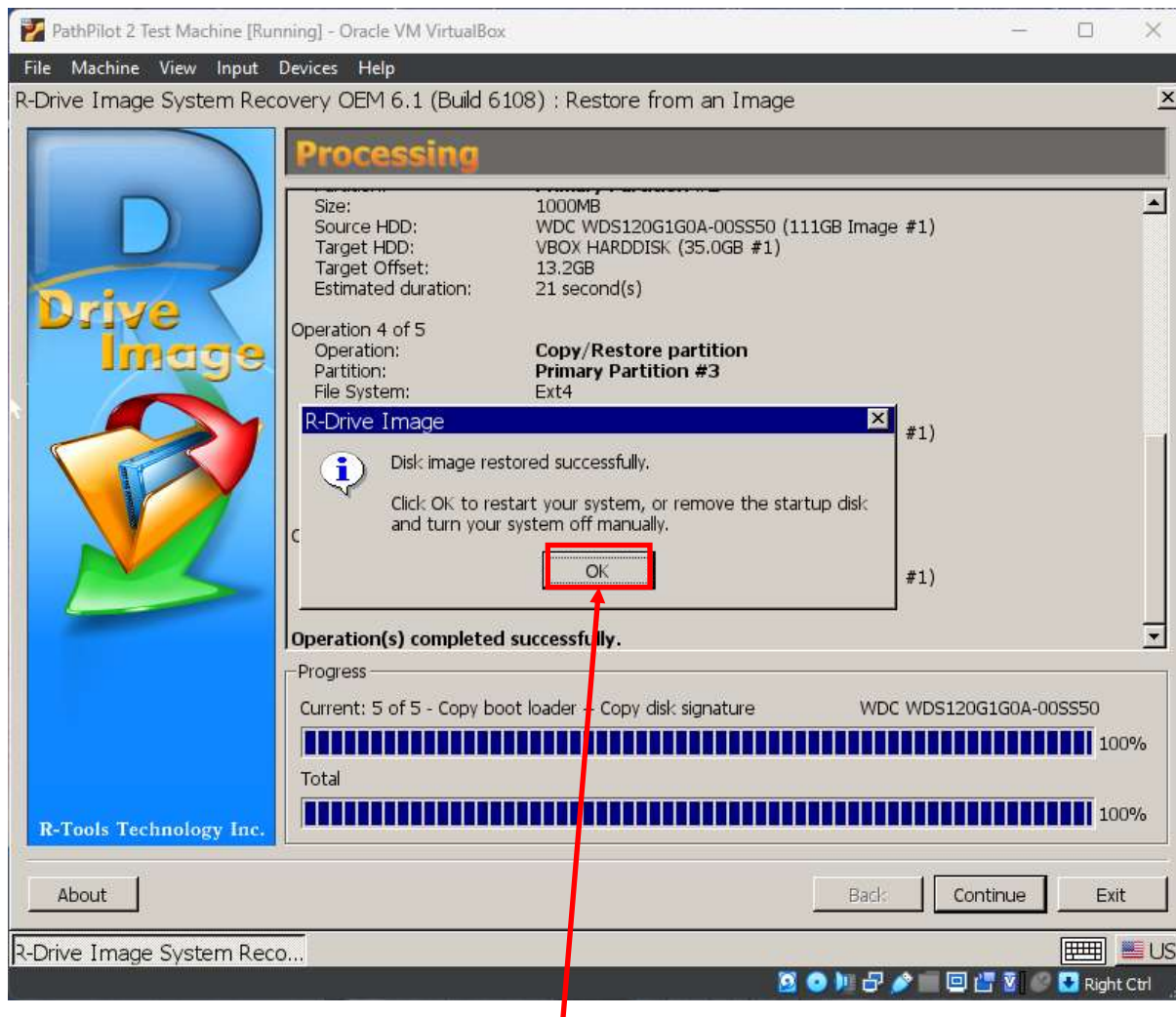
Click Yes

Section 4 – Installing PathPilot (Cont.)



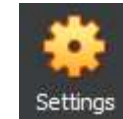
Click Start and grab a cup of coffee, unfortunately USB 1.1 is slow

Section 4 – Installing PathPilot (Cont.)

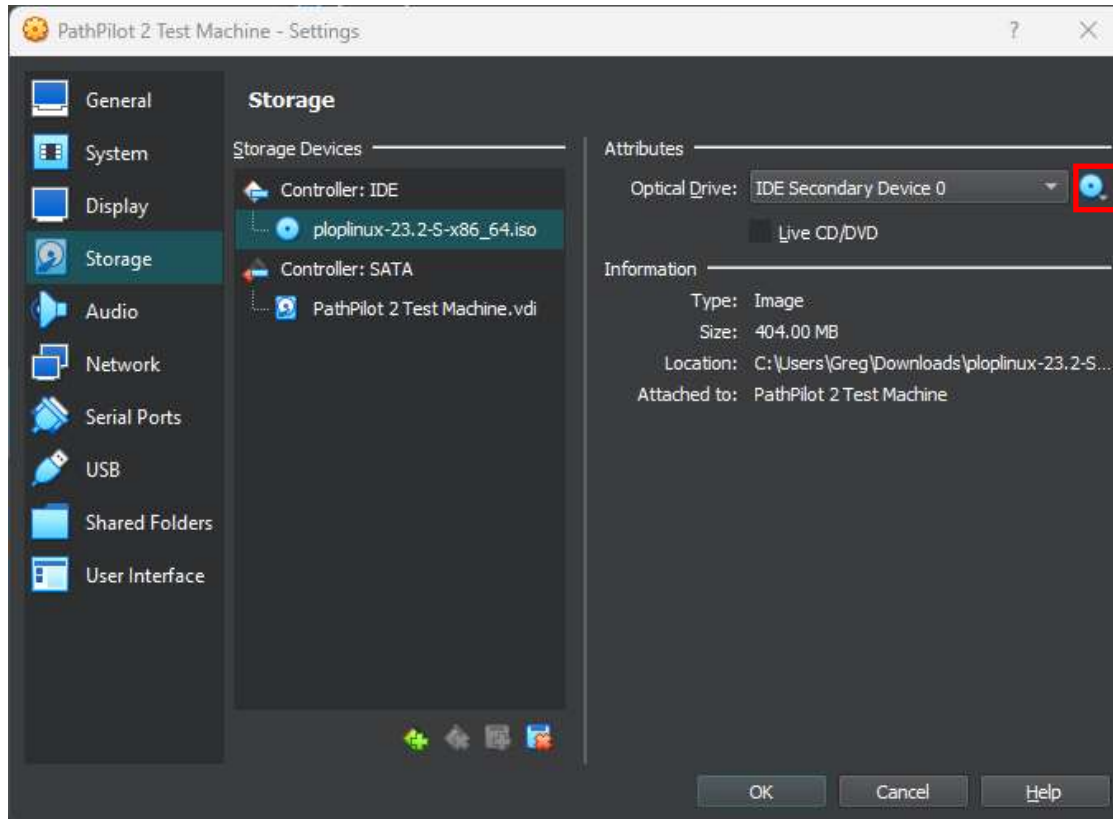


Click OK, Then click File > Close, choose power off the machine, click OK

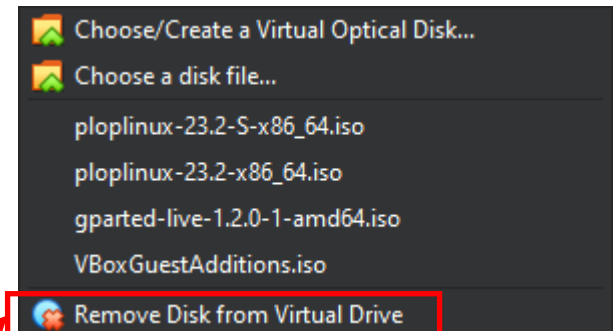
Section 5 – Remove Disks



1. Select the VM then click “Settings”:
2. Click the Storage Tab:



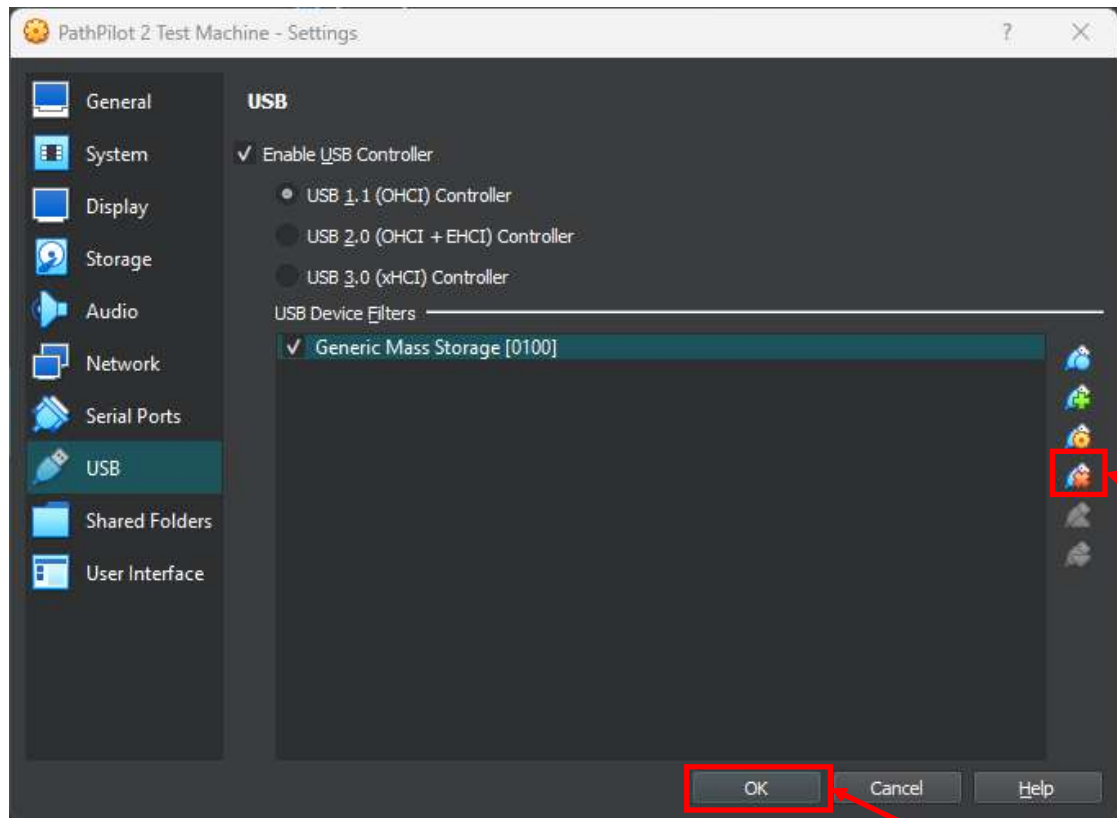
Click here



Click Remove Disk from Virtual Drive

Section 5 – Remove Disks (Cont.)

1. Click the USB Tab:

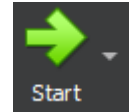


Click here to
remove the USB
drive

Click OK

Section 6 – Installing PathPilot

1. Select the VM and Click “Start”:



Congratulations, you now have a
PathPilot 2.0 Virtual Machine

Section 7 – Upgrading PathPilot

1. Click Agree (if you do)
2. Click any machine, and click Start
3. Press CTRL + ALT + X
4. In the Terminal window, type “mate-panel” and press enter
5. On the right side of the task bar, click on the networking symbol, and choose “Auto Ethernet”. This should put you on the internet.
6. Go back to the PathPilot screen, choose the Status tab, click “UPDATE” and then click “Check Online”.
7. If there is an update, and you wish to install it, click “Install”.

Section 8 – Disabling PathPilot launch on startup

1. Press CTRL + ALT + X
2. In the Terminal window, type “mate-panel” and press enter
3. Click Menu on the bottom left
4. Scroll to “Startup Applications” and click it
5. Deselect “PathPilot”
6. Select “Mate Panel”
7. Click Close, and restart



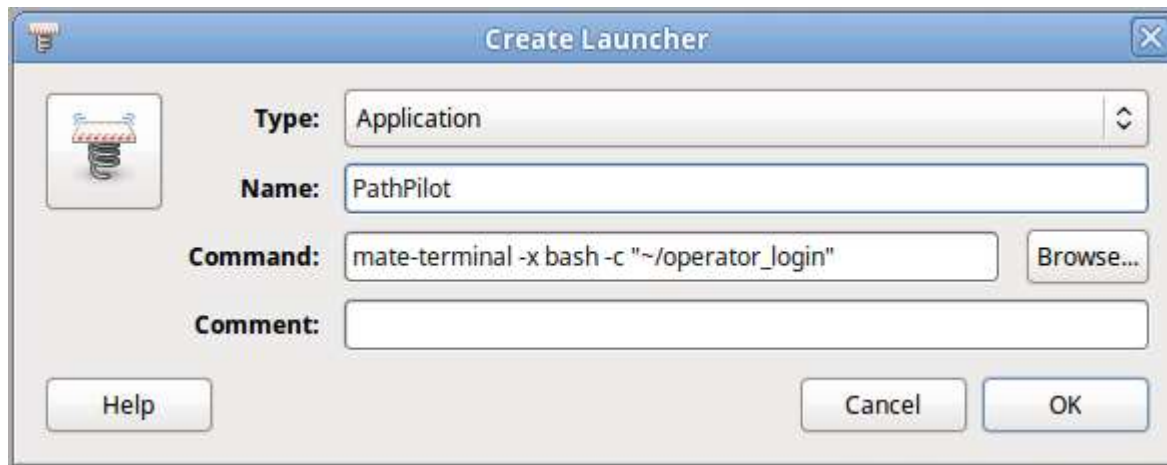
Section 9 – Creating a PathPilot launch icon

(NOTE: This will show a terminal window, but will prevent the VM from shutting down when EXIT is chosen from PathPilot)

1. Right click on the desktop and choose “Create Launcher”
2. Copy the fields as below:

```
mate-terminal -x bash -c "~operator_login"
```

3. Click OK



Section 10 – Resolution

(NOTE: This will show a terminal window, but will prevent the VM from shutting down when EXIT is chosen from PathPilot)

1. Screen resolution can be changed by clicking Menu, then searching for “Display”. Change to your liking.